



**Riley**  
communications

49 River Street  
Old Saybrook, CT 06475

(860) 510-0873

FAX (860) 510-0874

[www.rileycomms.com](http://www.rileycomms.com)

e-mail: [cgoff@rileycomms.com](mailto:cgoff@rileycomms.com)

Following is a sample of a print ad for a Kodak dye-sublimation color printer. The ad stresses the printer's operational speed, as well as its ability to put a clear protective coating on the prints.

**Client:** Eastman Kodak  
Rochester, NY

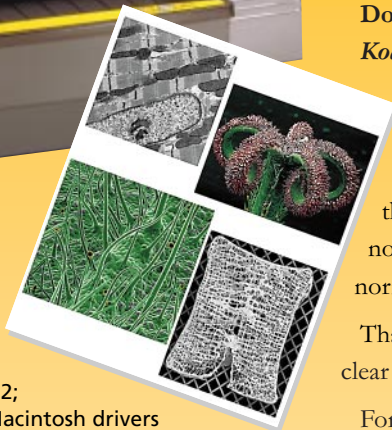
Call us if you'd like a printed copy, or get more information on these products at [www.kodak.com](http://www.kodak.com)

**This page illustration © Riley communications 1999.**

**Following pages © Eastman Kodak 1998.**

**All Rights Reserved.**

**All images are digitally watermarked  
to ensure traceability.**



# Takes about a minute. Lasts almost forever.

Document your work quickly and permanently with the *Kodak Digital Science 8650 PS Color Printer*.

The *world's fastest* dye-sub printer doesn't just give you rich, saturated 24-bit color overheads and superb continuous-tone photo prints; it also protects your investment by providing prints that resist fingerprints, fading, and dye transfer to plastic folders—no more reprinting your images because they've been damaged by normal handling or storage.

That's because the *Kodak Ektatherm XtraLife Ribbon* lays down a clear laminate over the image to protect your hard work.

For printing photographic-quality digital images from microscopy, storage phosphor, statistical analysis, field study documentation, or any other scientific or presentation application, no other printer offers the quality, performance, and flexibility of the *Kodak Digital Science 8650PS Color Printer*.

**Call Kodak Scientific Imaging Systems at (800) 225-5352 or (716) 722-5813 today for details on how you can sample the output of the *Kodak Digital Science 8650 Color Printer* using your image—**free!****

- Genuine Adobe PostScript Level 2; Windows and Macintosh drivers
- Network compatible; optional network card for integration into ETHERTALK, NOVELL NETWARE, TCP/IP networks
- SCSI-2 (2 ports), Centronics, and LocalTalk interfaces
- CMY, CMYK, or grayscale output
- 33 MHz RISC processor with 32 MB or 48 MB RAM for blazing speed (only 70 seconds for an 8.5 x 11 CMY print)
- Includes Kodak Ultracolor Rendering Program for optimum color matching and saturation

**Kodak**   
digital science™